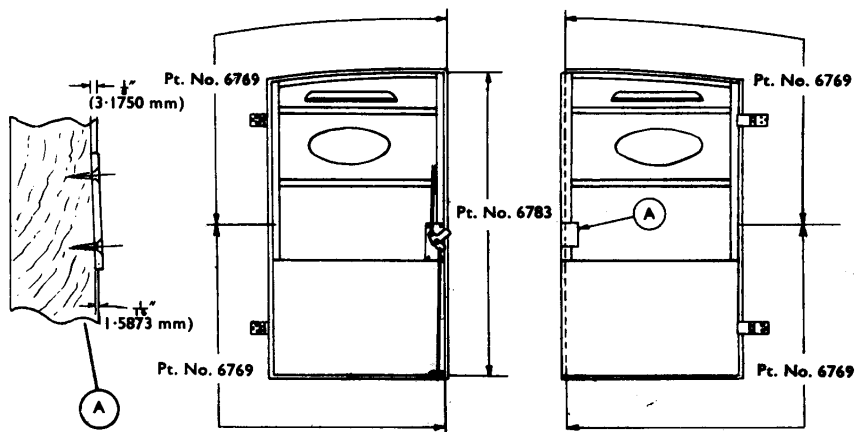


From approximately engine No. E2/CC/37251 rubber sealing strips are fitted between the inner face of the rear door flanges and the body frame to prevent the ingress of dust. The sealing strips are in five sections positioned on the doors as shown below. The four rubbers which fit around the outside edge of the doors Part No. 6769 are quarter round section and the centre strip Part No. 6783 fitted to the centre flange of the right hand door is rectangular section.



The sealing strips may be fitted to vehicles prior to the above engine number if required as follows:

- (A) Remove the rear doors and hinges and remove the rubber buffers from the doors and body frame. The screw holes in the section of the hinge which fits to the